



AMELIA ISLAND
CHAMBER

MUSIC
FESTIVAL 2021

20th
Season

CELEBRATING
20 YEARS OF
MUSICAL
EXCELLENCE



Midori



Valentina Lisitsa



Zukerman Trio



Balsam Range

Buy Your Tickets Today
www.aicmf.com or 904-261-1779

OUR 2021 SEASON

Dover String Quartet with Cellist Christopher Rex (Virtual)	January 31
New York Philharmonic String Quartet with Pianist Drew Petersen (Virtual)	February 14
Beer & G-Strings - Christiania Trio, Andres Diaz, Elizabeth Pridgen, and Chee Yun	March 14
Zukerman Trio	March 21
Dover Quartet with Edgar Meyer	March 26
Dover Quartet Master Class	March 27
Midori with Pianist Ieva Jokubaviciute	April 9
Valentina Lisitsa	April 18
Scherzando 20th Season Celebration	April 25
JB Scott's Swingin' Allstars featuring Vocalist Lisa Kelly	May 8
Peter and the Wolf, A Family Concert For All Ages	May 22
Balsam Range	May 23

* Performance venues, programs, dates, and times are subject to change.
Please visit www.aicmf.com for the latest information.



JB Scott's Swingin' Allstars



Elizabeth Pridgen



New York Philharmonic
String Quartet



Julie Coucheron

To Our Friends and All Music Lovers

Join us as we celebrate Amelia Island Chamber Music Festival's 20th season. The Festival has been presenting the world's greatest artists and providing music education for promising young students since our founding in 2001. It is exciting to present this season with both social distancing and online concerts because the pandemic has taught us, in the performing arts, how indispensable the audience is. The composer writes his music, and we spend our lives learning how to bring the music to life, but without people to express it to, we have no mission.

A wide array of internationally recognized award-winning superstars from multiple genres include Festival new-comers violin virtuoso, Midori, and the New York Philharmonic String Quartet with Drew Petersen. Returning favorites include Pinchas Zukerman with the Zukerman Trio, charismatic pianist Valentina Lisitsa, and concert violinists Robert McDuffie and Chee Yun Kim. Hosting these artists reflects our growing status as one of the nation's premier classical music festivals.

The ability to bring to Amelia Island the greatest musical artists in the world has only been possible through the exceptional generosity of our individual and corporate sponsors, the dedication of our Board of Directors, volunteers, and staff, and the enthusiastic support of our audiences. I am so grateful for all who have worked so hard to present this fantastic 20th season celebration safely and responsibly during these challenging times.

Welcome to our 20th season, which promises to be the best yet!

Sincerely,
Christopher Rex
General and Artistic Director



2021 *Ticketing Specials*

Performance venues, programs, dates and times are subject to change.

Please visit www.aicmf.com for the latest information.

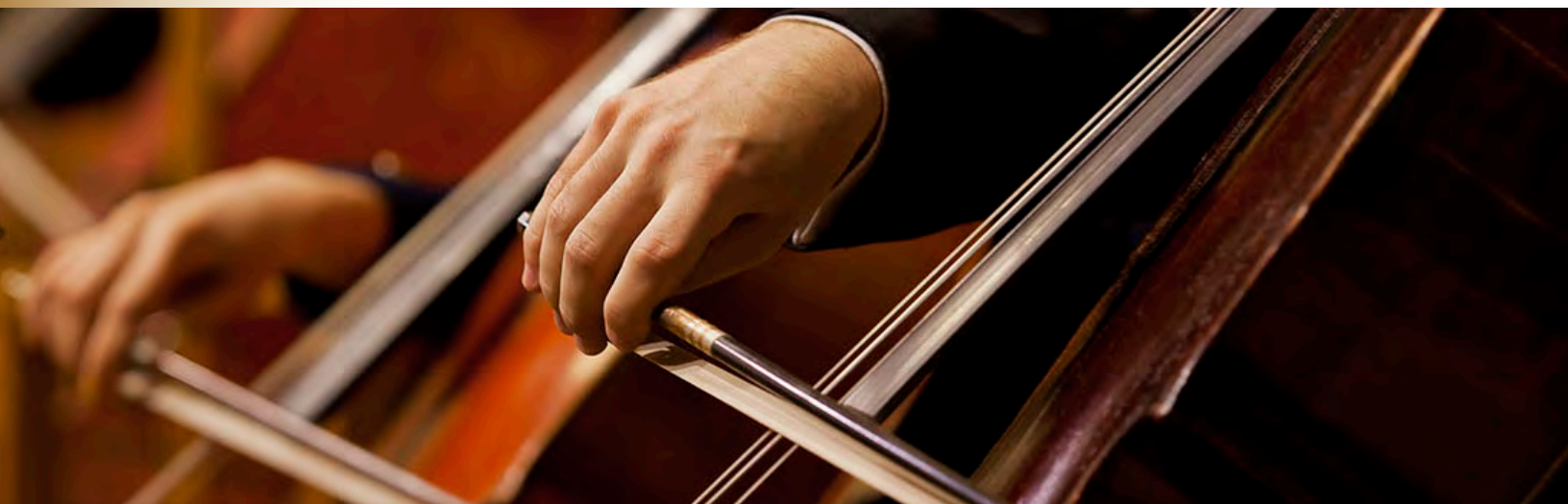
Tickets for all concerts are available online or by calling 904-261-1779.



Subject to availability, student tickets for all concerts can be purchased 30 minutes prior to a performance for \$10 with a valid student ID and proof of age under 25. Tickets are also available through the Student/Teacher/Parent Complimentary Ticket Program. If a concert is not sold out a week before the performance date, up to four complimentary tickets are available for a music student, the teacher, and parents. In addition, visitors to Amelia Island will receive a 50% discount on all Festival tickets by presenting a valid confirmation number from any lodging establishment on the island. All of these discounts, which cannot be combined, are available through the Festival office at 904-261-1779.

Support Your Festival

The Amelia Island Chamber Music Festival has been presenting the world's greatest artists and providing music education for promising young students since our founding in 2001. We have been able to do this thanks to your generous financial support. The largest support of our annual budget comes from individual donors and corporate sponsors like you. Visit us at www.aicmf.com to learn about the many benefits that are available to you by contributing at our various donor levels. In addition, we are a volunteer-driven organization, and you can support us by putting your skills to work as a Festival volunteer. Our website provides complete information on volunteer opportunities and how you can sign up.



Dover String Quartet with Cellist Christopher Rex

Sunday, January 31 (Virtual)

Program:

Shostakovich String Quartet No. 8 in C Minor

Schubert C Major Cello Quintet

The Dover String Quartet, AICMF's quartet-in-residence, is one of the most in-demand ensembles in the world. The first ever quartet-in-residence for the Kennedy Center and the recipient of the coveted Avery Fisher Career Grant, the Dover is also quartet-in-residence for the prestigious Curtis Institute of Music in Philadelphia, the Bienen School of Music at Northwestern University, and Artosphere. The Quartet's distinctive sound has helped confirm its status as one of the finest young American string quartets of their generation.

The Quartet will be joined by cellist Christopher Rex, founder and Artistic and General Director of the Amelia Island Chamber Music Festival. He retired as principal cellist of the Atlanta Symphony Orchestra in 2018 after serving in that position for 39 years.





LIKE THE KEYS OF A PIANO

INDIVIDUAL IN PITCH. UNITED IN PURPOSE.

First Federal Bank is proud to support
the Amelia Island Chamber Music Festival.

904-321-0400 | ffbf.com

Fernandina Beach • Wildlight • Yulee



FIRST FEDERAL BANK

Newsweek's Best Small Bank in Florida



New York Philharmonic String Quartet with Pianist Drew Petersen

Sunday, February 14 (Virtual)

Program:

Mendelssohn String Quartet No.2 in A Minor

Schumann Piano Quintet in E-flat Major

The New York Philharmonic String Quartet is comprised of four Principal musicians from the Orchestra. The group, formed in January 2017, made its debut as the solo ensemble in John Adams's *Absolute Jest* in New York in March 2017. All four members are multiple prize winners, have appeared as concerto soloists with the Philharmonic and orchestras around the world, and have appeared frequently in the Philharmonic's chamber music series at David Geffen Hall and Merkin Hall.

Acclaimed young American pianist Drew Petersen is a sought-after soloist, recitalist, and chamber musician in the United States, Europe, and Asia. He's been praised for his commanding and poetic performances of repertoire ranging from Bach to Zaimont and is the recipient of the 2018 Avery Fisher Career Grant, 2017 American Pianists Award, and the Christel DeHaan Fellow of the American Pianists Association, as well as a residency at the University of Indianapolis.



LET
US
STAY
WITH
YOU.®

A world-renowned restaurant with a local address.



Make every occasion special with an unforgettable dining experience at Salt, a Five-Diamond AAA-rated restaurant. Explore classic flavors from our seasonal menu or tempt your palate with the unique Chef's Adventure Menu. Selected by Forbes Magazine as a *Top Chef's Table* in America, Salt restaurant welcomes local residents and resort guests.

For reservations or to plan an event, please call 904-277-1087.

For dining reservations, private events, and additional information, please visit ritzcarlton.com/ameliaisland.



THE RITZ-CARLTON

AMELIA ISLAND

Beer & G-Strings

Sunday, March 14

Venue: Sadler Ranch

Program:

Piazzolla Tangos “Spring” and “Autumn” from Four Seasons of Buenos Aires

Vivaldi Concertos “Summer” and “Winter”

A collaborative concert, Beer and G-Strings brings festival favorites the Christiana Trio, Andres Diaz, Elizabeth Pridgen, and Chee Yun together for an exciting afternoon of string classics.





MASTERPIECE

BRINGING YOU THE MOST CAPTIVATING DRAMAS
SUNDAY EVENINGS ON WJCT-TV 7.1 (COMCAST 440)

wjct

Zukerman Trio in Concert

Sunday, March 21

Venue: First Baptist Church

Program:

Beethoven Kakadu Variations

Arensky Trio No. I in D Minor

Brahms Trio in C Major

With a celebrated career spanning five decades, Pinchas Zukerman reigns as one of today's most sought-after and versatile musicians as a violin and viola soloist, conductor, and chamber musician. He launched his trio in 2013 and since then the ensemble has traveled around the globe and performed at such major festivals as Ravinia, the BBC Proms, Edinburgh, Verbier, and Bravo! Vail.



WE MUST FEED THE IMAGINATION, TRUST THE
CURIOSITY OF CHILDREN AND YOUTH ~MARGARET MEAD



AMELIA MUSIC STUDIO



Amelia Art Studio



FINE ARTS ON AMELIA ISLAND

AMELIAMUSICSTUDIO.COM
AMELIAARTSTUDIO.COM

Dover String Quartet with Bassist Edgar Meyer

Friday, March 26

Venue: Amelia Baptist Church

Program:

Edgar Meyer String Quintet

Duke Ellington Fantasy by Paul Chihara

The Dover String Quartet, AICMF's quartet-in-residence, is one of the most in-demand ensembles in the world. The first ever quartet-in-residence for the Kennedy Center and the recipient of the coveted Avery Fisher Career Grant, the Dover is also quartet-in-residence for the prestigious Curtis Institute of Music in Philadelphia, the Bienen School of Music at Northwestern University, and Artosphere. The Quartet's distinctive sound has helped confirm its status as one of the finest young American string quartets of their generation. The Quartet will be joined by acclaimed composer and performer, Edgar Meyer, bassist, on March 26.



In demand as both a performer and a composer, Edgar Meyer has formed a role in the music world unlike any other. Hailed by *The New Yorker* as, "...the most remarkable virtuoso in the relatively unchronicled history of his instrument." Mr. Meyer's unparalleled technique and musicianship in combination with his gift for composition have brought him to the fore, where he is appreciated by a vast, varied audience. His uniqueness in the field was recognized by a MacArthur Award in 2002. Mr. Meyer's past collaborations include many festival favorites such as Joshua Bell, Béla Fleck, Yo-Yo Ma, and Chris Thile.

Dover Quartet Master Class

Saturday, March 27

Venue: Prince of Peace Lutheran Church



STAY A PART OF ADVENTURE

Whatever you're a part of.
Stay that way.

OMNI  RESORTS
amelia island | florida

[OMNIHOTELS.COM/AMELIAISLAND](https://omnihotels.com/ameliaisland)



Midori *with Pianist Ieva Jokubaviciute*

Friday, April 9

Venue: First Baptist Church

Program:

Claude Debussy-Violin Sonata in
G Minor, L. 140

Wolfgang Amadeus Mozart-Violin
Sonata No. 24 in F Major

Cesar Franck-Violin Sonata in A Major

Pianist: Ieva Jokubaviciute

A visionary artist, activist and educator, Midori has had a unique career which transcends traditional boundaries through her relentless drive to explore and build connections between music and the human experience. A leading concert violinist for over 35 years, Midori regularly transfixes audiences around the world, bringing together graceful precision and intimate expression that allows the listening public to not just hear music but to be personally moved by it.



Pianist: Ieva Jokubaviciute

Lithuanian pianist Ieva Jokubaviciute's powerfully and intricately crafted performances have earned her critical acclaim throughout North America and Europe. In 2016, Ieva began a collaboration with the violinist Midori, with recitals in Canada, at the Cartagena International Music Festival in Columbia, and in Germany and Austria. They have since given recitals in Japan, Poland, Peru, Columbia, Mexico, India, and Sri Lanka.

*Every house
seeks a story
to fill it with
the memories
of a well played
Song*

*The Song of
Life and Living
melting in to
One*

*One ever cherished
One ever born
One just for you
The One you call
Home*



**BERKSHIRE
HATHAWAY**
HomeServices

Chaplin Williams Realty

ChaplinWilliams.com



**Every home seeks a story. Every song needs a home.
Let us help you find Yours.**

904-261-9311

A proud supporter of the Arts in Nassau County

Valentina Lisitsa

Sunday, April 18

Venue: Omni Amelia Island Resort

Program:

Beethoven-Liszt Symphony #3 Eroica

Chopin Scherzo #4 E major op 54

Rachmaninoff-

Variations on theme by Corelli op 42

Liszt Spanish Rhapsody

With more than 83 million YouTube views, piano virtuoso Valentina Lisitsa is one of the most watched classical musicians on the internet. An Amelia Island favorite, Valentina is at ease with a vast repertoire, ranging from Bach and Mozart to Rachmaninoff, Shostakovich and Bernstein. Her orchestral repertoire includes more than 40 concertos.



CANCER TREATMENT SHOULDN'T FEEL *LIKE A SOLO*



Ackerman Cancer Center provides whole-patient care, right here on the island.

Turn to the team that treats cancer personally. Our center is at the forefront of cancer treatment technology that preserves a brighter quality of life during and after cancer treatment. Less travel time and fewer side effects give you more time to enjoy life — and music, of course.



ACKERMAN
Cancer Center

Whole-Patient Cancer Care + Proton Therapy

Amelia Island | (904) 447-1660

AckermanCancerCenter.com



- Cosmetic Tooth Whitening
- Gentle Cleanings
- Oral Surgery
- Dental Bonding & Fillings
- Ceramic Crowns
- Sedation
- Porcelain Veneers
- Periodontal Therapy
- Dental Implants
- Root Canals
- Digital Impressions
- Laser Periodontal Therapy & LANAP- Periodontal



Steven A. Garrett, DMD Laurie A. Kitson, DMD Jennifer L. Mokris, DMD Joshua O. Bietenholz, DMD

AMELIA DENTAL GROUP

COMPREHENSIVE DENTISTRY

Creating Vibrant Smiles for Healthy Lifestyles!

904.261.7181

Call **today** for your comprehensive evaluation!

www.ameliadental.com

1947 Citrona Drive | Fernandina Beach, FL 32034 | 904.261.7181

Scherzando 20th Season Celebration

Sunday, April 25

Venue: Ritz-Carlton, Amelia Island

Program:

Beethoven Scherzo from Piano Trio Op. 1, No. 1

Brahms Scherzo from the Sonatensatz in C minor, Op. posth., “FAE Sonata”

Schubert Scherzo from the 2 Cello Quintet

Wieniawski Scherzo Tarantelle

Rachmaninoff Allegro Scherzando from the Cello Sonata in G Minor

Beethoven Scherzo Mvt. III from String Quartet Op, 95

Scherzo and Finale from Mendelssohn Octet in E-flat Major



To celebrate the 20th season of the Festival and to pay tribute to the memory of renowned cellist and beloved festival favorite, Lynn Harrell, a collaborative concert entitled “Scherzando” will be presented at the Ritz-Carlton on Sunday, April 25. This concert will feature stars from the Festival’s 20 successful seasons and friends and colleagues of Harrell. Artists will include violinists **Robert McDuffie**, **Amy Moretti**, **Helen Nightengale**, and **Giora Schmidt**, violists **James Dunham** and **Suzanne LeFevre**, cellists **Zuill Bailey** and **Christopher Rex**, and pianist **Elizabeth Pridgen**. They will perform virtuoso works of Beethoven, Brahms, Wieniawski, Schubert, and end with the Scherzo and Finale of Felix Mendelssohn’s great Octet.





Looking to Reduce **YOUR ENERGY BILL?**

Save money *and* make your home more efficient with a **FREE** Home Energy Check-Up.



Schedule yours.
Contact FPU Today!



Ask how you can get up to a \$100
air conditioning or heating rebate.

FLORIDA PUBLIC
UTILITIES

FPUC.com/FreeCheckup | 800.427.7712

PROMO: NA19-173 092319

JB Scott's Swingin' Allstars *featuring Vocalist Lisa Kelly*

Saturday, May 8

Venue: TBA

Program:

Jazz Classics from the traditions of Louis Armstrong, Ella Fitzgerald, Billie Holiday, Peggy Lee, Clark Terry, Lee Wiley, Ruby Braff, Eddie Condon, Trummy Young, and Kenny Davern.

This top-shelf group of pros is dedicated to playing Chicago Swing /New Orleans style Jazz in a highly entertaining, musically spirited fashion. This group is led by the flamboyant, virtuoso trumpeter, JB Scott, former musical director of the world-famous Dukes of Dixieland. Featured is award-winning vocalist Lisa Kelly, well-known for her rich, smooth tone and swinging delivery of lyrics and the unique storytelling vocal styling of versatile banjo/guitarist Ken Calhoun. Rounding out the 'allstar' cast are legendary musicians Dave Steinmeyer, former trombonist and bandleader of the renowned Air Force Airmen of Note, multi-instrumentalist Bill Prince on clarinet and sax, who played with Buddy Rich, the Billy Maxted band, and many others, Walt Disney World bassist Jay Mueller, and former drummer with the USMC Band of New Orleans, Jeremy Smith.



The band has a broad, versatile repertoire that includes tributes to the classics from the 1920s, 1930s, and 1940's to well-penned original songs from the style of Louis Armstrong's Allstars New Orleans Traditional, Chicago Style, and even a bit of Big Band Swing. There are also influences that include Clark Terry, Ruby Braff, Ella Fitzgerald, Billie Holiday, Lee Wiley, Peggy Lee, Eddie Condon, Trummy Young, and Kenny Davern. Long-time fan Bill Harding says, "JBSSA's is a real wealth of experienced, creative musicianship in one fantastically entertaining group!" To quote Brian Harvey, The Hot Jazz Channel, "Lisa's Her 'Ella' like scat is really impressive. JB's versatile style enables him to swing like crazy! This is a highly entertaining exciting band that can please a wide variety of audiences."



Spartina 449

Designer Handbags

Brahmin • Lisi Lerch • Traveleon • Vera Bradley
Rioni • Hammitt • Consuela • Hobo • Sonda Roberts
Michael Kors • Spartina 449 • Queork

Designer Jewelry

Mariana • Firefly • Brighton • Jayden Star
Holly Yashi • Connie Bennett • Kristina Collection



HANDBAGS • HATS • SCARVES • JEWELRY
GIFTS FOR WOMEN AND CHILDREN

**Bring in your hotel key to receive
10% OFF any full priced item.**

114 Centre St., Fernandina Beach • 904-261-6993 | Mo-Sa 10-5 • Su 11:30 - 4:30



Look for our in-store specials found only on Facebook.



In travel, it's all who you know,
let Wallace Pierson Travel
introduce you!



How excited are you, now that it is 2021?

If you are ready for life enriching, unique travel opportunities, our friends around the country and the globe are ready to welcome you.

From private access to museums or theatres, to dining with a diplomat, or behind the scenes animal experiences, we are ready to share this wonderful world with you, Wallace Pierson Travel style.

Mention code "AICM2021" at time of booking and WPT will donate \$25 to the Amelia Island Chamber Music Festival

wallacepierson.com | 904.261.5914 | info@wallacepierson.com

Peter And The Wolf

Saturday, May 22

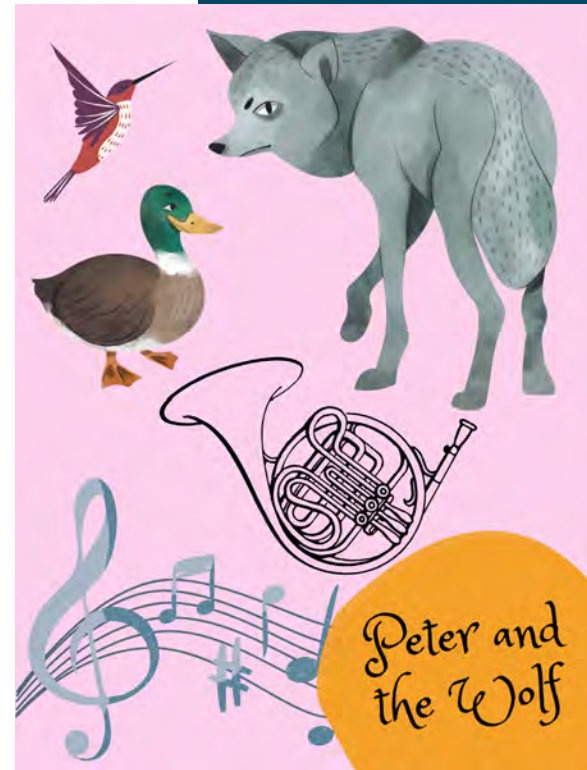
Venue: Amelia Community Theater

Program:

“Peter and the Wolf”- A Family Concert For All Ages
by Russian composer Sergei Prokofiev

Enjoy a children’s theatre composition based on the Russian folk tale by composer Sergei Prokofiev. Pianists Julie Coucheron and Elizabeth Pridgen will perform a four-hand version of the iconic composition, along with dancers from the Amelia Island Dance Festival, under the direction of Susan Dodge, and narrated by Frank O’Donnell. The Family Concerts are developed in association with the AICMF Young Patrons Group.

Julie Coucheron is an award-winning pianist who tours internationally. Pianist **Elizabeth Pridgen** is a distinguished soloist and chamber musician who is a director of the Atlanta Chamber Players. A noted choreographer and professional dancer, **Susan Dodge** was formerly a member of the Paul Taylor Dance Company. She has taught at universities and conservatories across the nation. **Frank O’Donnell** is a familiar figure at Amelia Community Theater where he is best known for his iconic roles including Atticus Finch in To Kill a Mockingbird and as Scrooge in Scrooge! The Musical.



Performances at 11 a.m. and 2 p.m.
Tickets: Children \$5 and Adults \$15



Where there's always something happening!



Celebrating the Arts:
Literary. Culinary. Performing.
Visual. Creative.

*Visit StoryandSongBookstore.com
for details.*

1430 Park Avenue • (904) 601-2118

EXPERIENCE
Style



LOTT'S FURNITURE

— EST. 1947 —

2110 Sadler Square | Fernandina Beach, FL | 904.261.6333
401 Mary Street | Waycross, GA | 912.283.6350

lottsfurniture.com



**COURSON
& STAM, LLC**

CERTIFIED PUBLIC ACCOUNTANTS

**Accounting, Small Business Services
and Tax Preparation**

Pierre Laporte, CPA

Lindsay Corigliano, CPA

(904) 261-7803 • Fax: (904) 261-1011
2398 Sadler Rd., Fernandina Beach, FL 32034

Balsam Range

Sunday, May 23

Venue: Sadler Ranch

Program:

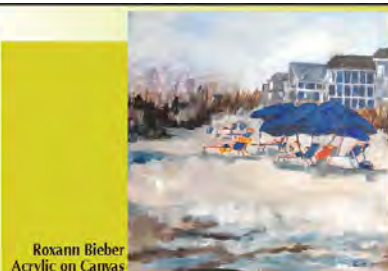
Selections from traditional old-school bluegrass to those of contemporary newgrass.

The 2018 International Bluegrass Music Association's Entertainer of the Year, Balsam Range, has become one of the genre's most award-winning acts. Since forming in 2007, the group has garnered 13 IBMA awards on the heels of eight critically-acclaimed albums. Balsam Range has left audiences spellbound while headlining major festivals from coast-to-coast, selling out venues across the nation and in multiple appearances at the Grand Ole Opry.





Custom Framing • Fine Art



Monday - Friday 10am-5pm • Closed Saturday & Sunday
1875-B S. 14th St • 904-310-6610 • jwframegallery.com

You are welcome here!



Amelia
Plantation
Chapel

An Interdenominational Community Church

Sunday Worship Services
at 9:15am and 11:15am
36 Bowman Road
904.277.4414
www.ameliachapel.com



Your one-stop shop.

| Digital printing & copying |

Document finishing | Packing & Shipping Services

| Mailbox services Notary services | Fax services and more|

1417 Sadler Road
Fernandina Beach, FL 32034
904.277.0820. Tel.
904.277.0890 Fax

Copyright 2014 The UPS Store

The UPS Store™

Music Education and Special Programs

Beginning with our inaugural year, the Amelia Island Chamber Music Festival knew the importance of music education. Master Classes and tutoring for our Young Resident Artists program played an important role in our first concert season. Now in our 20th season, this program has not only thrived, but has continued and expanded to become The Spring Institute. Here, the Beth Newdome Fellowship Artists, promising and acclaimed students from the nation's leading conservatories and universities, are mentored by professional musicians and our quartet-in-residence, The Dover Quartet. This training program culminates in a series of public performances, most of which are free of charge.

Committed to education, we know students and audiences benefit and learn from attending Master Classes. Therefore, while here to perform one of their concerts, the Dover Quartet will conduct a free master class for young artists who are currently attending Jacksonville area schools and universities. Attendance by all who love to listen and learn is encouraged. Partnering with the Boys and Girls Clubs of Nassau County, we have developed a Strings Education Program. The Amelia Island Chamber Music Festival provides instruments and lessons for a five-day-a week learning experience. Student recitals, as well as performances by professional musicians have been presented at the Miller Freedom Center and the Roberts Learning and Achievement Center. These programs will resume when the current COVID-19 restrictions are lifted.



Fine Arts House Portraits
by Loraine King
 Preserve Your Memories
 in a Beautiful and
 Unique Way



Homes, Boats, Car,
 Campers/Airstream,
 Vacation locations, Gift,
 Whatever has meaning
904-491-3737

loraineking.com • loraine@loraineking.com

**AMELIA ISLAND
 DANCE FESTIVAL**



Amelia Island Dance Festival endeavors to bring the joy and artistry of dance to historic Amelia Island through the professional presentation of the best in classical and contemporary dance. Our performances showcase talent from across the country, and the finest from local dance institutions of Northeast Florida.

www.ameliaislanddancefestival.org

The Amelia Island Chamber Music Festival greatly appreciates the support of our advertisers and we hope you will support them as well! Be sure to mention that you saw their ad here.

Keep up with
 Everything Amelia
 with the
Amelia Islander
 Magazine

Your Hometown Newspaper




FLORIDA'S LARGEST WEEKLY NEWSPAPER
NEWS LEADER
 Serving All
 of Nassau County
 904-261-3696 • www.fbnewsleader.com

España
 Restaurant & Tapas

Traditional Flavors from
 Spain & Portugal

(904) 261-7700 • 22 S. 4th Street
 Historic Downtown Fernandina Beach
 www.espanadowntown.com

Amelia
ISLANDER
 JANUARY 2021



Chamber Music Festival
 plus: A HOME FOR HEARD • SEAN MCCARTHY • FERNANDINA BEACH

Visit us online at
ameliaislander.com

Kurt Marasco
 Principal
 (904) 447-4567
 kurt@technuity.org



TECHNUITY.org
 IT Consulting and Services
 Relax. We've got it.

IVINS INK STUDIO

ART DIRECTION
 ILLUSTRATION / CARTOONING
 GRAPHIC DESIGN
 STAGE DIRECTING
 ACOUSTIC MUSIC

WILLIAM P. IVINS
 Fernandina Beach, Florida
 412-606-4484 | bill@ivinsink.com | www.ivinsink.com



Young Patrons: Join the party!



From left: Trang Wiest, Ktimene Axetell, Lauren Templeton, Jennifer Dauer, missing is Carrie Mays.

Dynamic young adults, 21 to 50, who love music and desire to mingle and network may enjoy discounted tickets to concerts. This all-inclusive ticket includes a pre- or post-concert party. A group of local women, pictured here, launched this program as a result of a cocktail party they hosted preceding the popular Winton Marsalis concert.

The Young Patrons have planned an exciting 2021 kick-off of Peter and the Wolf, a family concert for all ages, Saturday, May 22 at the Amelia Community Theatre.

Membership in the Young Patrons Group is Free! For more information or to join the group, visit www.aicmf.com or call 904 261-1779



BRADDOCK METALLURGICAL
Quality Metal Treating Since 1953

LOCATED IN

Daytona Beach, FL • Atlanta, GA • Riverview, FL • Bridgewater, NJ

Jacksonville, FL • Boynton Beach, FL • Charlotte, NC • Bayamon, Puerto Rico

"In Memory of Steve Braddock"

Whether you are a professional or a beginner.
All roads lead to Keyboard Connection
your official Yamaha Piano Dealer!



*To purchase the piano of your dreams visit
Keyboard Connection today!*

9912 San Jose Boulevard, Jacksonville, FL
Pianosjax.com • 880-0002

disklavier *Clavinova*





PURCELL • FLANAGAN • HAY • GREENE

FAMILY BUSINESS WEALTH

Attorneys and Counselors

PRACTICE AREAS

Asset Protection
Business Planning and Transactions
Charitable Planning
Commercial Litigation and Business Dispute Resolution
Elder Law
Estate, Trust and Guardianship Administration
Estate and Multi-Generational Family Planning
Will Contests, Trust and Guardianship Litigation
Real Estate
Tax Controversy and Litigation
Tax Planning

SHAREHOLDERS

Timothy L. Flanagan
Jonathan L. Hay
Christopher J. Greene
John I. Fishburne III
Robert H. Trudeau
Brian J. Hershorin
Julie A. Saieg
Kevin Kane

ASSOCIATES

Linda R. Wicker
Lyudmyla Kolyesnik
Kyle M. Johnson
Devon S. Richards
Kristine M. Scott

PROVIDING CLARITY,
EARNING TRUST, AND
ADDING VALUE



AMELIA ISLAND | JACKSONVILLE | PONTE VEDRA BEACH
(904) 355-0355 | WWW.PFHGLAW.COM

Sponsors & Contributors

The Amelia Island Chamber Music Festival. gratefully acknowledges our many contributors for their financial support. Without you, our Festival would not exist, and we sincerely thank you for your support. The following list presents contributions and pledges made from August 1, 2019, through December 4, 2020. Every effort has been made to ensure accuracy. If we have limited or incorrectly listed a name, we sincerely apologize and ask that you notify us at 904-261-1779 or email us for correction.

Corporate Sponsors

Amelia Island Tourist Development Council
Arts and Culture Nassau
First Federal Bank
Florida Public Utilities
Keyboard Connection- Jack Melvin
National Endowment for the Arts
Omni Amelia Island Plantation Resort
Rayonier Advanced Materials Foundation
Rayonier, Inc.
Ritz-Carlton Amelia Island
State of Florida, Division of Cultural Affairs and the Florida Arts Council
WestRock
WJCT Public Broadcasting

Hope Nautilus - \$20,000 +

Patricia Clegg
Barbara Alleva Gant and Donald R. Gant
Jack and Sandy Halsey – The Halsey Family Foundation

Diamond Nautilus - \$10,000 +

Henry Berghoef and Leslie Lauer Berghoef
Paul and Kathy Bosland
Sue Braddock
Allen and Sharon Lennon
Tom and Jeanette Pippin
Eric and Gail Sakurai

Platinum Nautilus -\$5,000-\$9,999

Ron and Dorothy Cheeley
Michel and Lyn Deroy
Jacqueline Dorrance-Tomlinson
Jim and Jane Flynn
Bob and Pat Henderson
Sally Henderson
Bill Hensley and Anne Taylor Hensley
Jack and Bev Keigwin
Judy and Scott McCue – and the Judy and Scott McCue Fund at
The Chicago Community Foundation
Rebecca Stafford
Bob and Pat Stichweh

Gold Nautilus-\$2,500-\$4,999

Bob and Robin Bolan
William and Shelia Braddock
Richard and Jeanne Conner
Paul and Ann Glendon
Phil and Claudia Koerner
Bob and Jane Lindberg
Jack and Diane Lord
Peter and Jackie Martin
Donald McCurry and Suzanne Keith
Michel and Heidja Kruse
Christopher Rex and Dr. Martha Wilkins
Bud and Elizabeth Tanis
Tom and Vicki Whittemore
Richard Williams and Carole Thoele-Williams
Leewood Woodel

Silver Nautilus-\$1,000-\$2,499

Dr. Scot and Alexandra Ackerman-The Ackerman Cancer Center
Cathy Adams
Cary and Karen Blair
Francesco and Amanda Borghese
William and Sheila Braddock
Peter and Merrilee Chamberlain
Henry and Carolyn Conway
Jack and Margaret Cooper
James Daubel
Bill and Anne Gower
Dan Groth and Frances Peters
Andrea and Corky Hoffman
Joanna Kennard
Dr. Howard S. and Carol A. Kirshner
Robert Lacey III
Steve and Jo-Ann Leimberg
Dr. Joe Marasco
Donald and Sally McCarron
Cynthia and William Merman
Linda Merritt
Wayne and Jean Middleton
Don and Mary Miech
Reinhold and Jennifer Preik
Michael and Irene Sanchez
John Stancin and Margaaret Bellucci
Richard and Helen Tufaro
Jonathan Wade
Kevin and Lisa Webber
Hugh and Ann Williams
Cynthia Zarsky

Crystal Nautilus \$500-\$999

Sonja Foster Allen
Nancy Bartness
Mike and Kathy Baxter
Richard Beaty
David and Betty Berkman
David and Laurie Bowers
Michael and Charlotte Bowling
Sarah Hill Buck
Richard and Patricia Campana
Barbara Cardile
Bill and Jane Casper
Russell and Margaret Dancy
Dr. George and Jean De Tarnowsky
Walter and Gracia Drew
John and Sandra Fulton
John and Kate Giffin
Janet D. Goldstein
McDiarmid Gravely
William and Melissa Hendrickson
Howard Haims and Carole Cooper-Haims
Corky and Andrea Hoffman
Dr. Robert Joyce and Rebecca Joyce
Adam Kaufman and Dee Torre Kaufman
Mark and Donna Kaufman
Stephen and Susan Kaye
Dr. Walter Keenan

Beverly and Allen Kezbom
Anthony and Peggy Kolasa
Ken and Victoria Lanier
Vincent Martorano
Don and Mary Meich
Dr. Frank and Janet Milliken
David and Kathy Miller
Kathleen Minder and Stephen Gessner
Judy Raggi Moore
Judy and David Ogden
Anne and Ralph Oman
Charles and Janet Plosser
Fred Ragsdale and Jennifer Salisbury
Steve and Nancy Rieck
Blaine and Linda Rieke
Sam Schwartz
Ed and Vicki Segraves
Dr. and Mrs. Gino Segre
Carol C. Todd
Theodora Vanderzalm
Andrew and Diane Watson
Klaus & Barb Wenger
Wilby and Catherine Whitt
Chip and Nancy Wood

Friends of the Festival \$100--\$499

Hugh and Kathy Aberman
Susan Alexander
Virginia Ardia
Berta Isabel Arias
Lindsay and Katherine Arthur
Edward Avra
Ktimene and Michael Axetell
David and Robyn Barrie
David and Gloria Beeman
Thomas and Connie Black
Joanne Blalock
Jerry Blancett
Emma Mills Bledsoe
Sarah Borns
Charlotte and Mike Bowling
Sonya Brabston
Mary Brannon
Ann and Larry Burns
Brenda Carr
Paul Clark
Jack and Margaret Cooper
John Cotner
Kathy Davidson
Don and Cathy DeCesare
Sylvia Derrick
Kathleen Devlin
Bo and Diane Duffy
Ronald Eash and Mary Rood
Sarah Edwards
Barry and Margie Efron
Jess and Sharon Elliott
Emily Farmer
Virginia Feazell

Sponsors & Contributors

Robert and Ann Freeman
Brad and Leanna Gallagher
Linda and Michael Gard
Beth-Ann Gentile
Fred and Patricia Gieg
Ann and Wendell Godbee
Daniel Gold
Louis and Susan Goldman
Jose Gonzales and Ana Diaz
Diana Gould
Raymond Halsey
Gordon and Rosemary Hart
Robert and Janet Hartig
Horst and Irmgard Hehmann
Stephen and Paula Heuser
Phyllis Hockett
Paul Hoffman
Barbara Hornick-Lockard
John and Gayle Howard
Peter and Ruth Igoe
Scott and Nancy Inboden
Linda Janca-Braatz and David Braatz
Susan and Anthony Jarzyna
Lorraine and Neil Johnson
Thomas and Loraine King
Ronald and Janet Kolar
Anthony and Peggy Kolasa
Linda Kurtz
David Lakari
Bronson and Paula Lamb
Kris Landers
Robert and Karen Lavine
James and Elizabeth Layman
Lisa Lee
Remberto Leiseca
Thomas Logan
Gary and Janice Long
Dr. Alan and Joellen Marks — In honor of Dr. and Mrs. Robert Joyce
Lynne and Khrys McCardle
Richard McCormick
Tim McNamara, K.D. and Judy Whitaker
Timothy and Kathleen Meredith
Anna and Hays Mershon
Dave and Kathy Miller
James Miller

Timothy Miller
Moi and Cheryl Monroe
Louise Mozena
Susan Nelson
Steve and Michelle Nielson
Maureen Nussman
Tom Orr
Jeff Packer and Jane Sandhaus Packer
Len and Lynne Pelletier
Marvin and Lynette Perlis
Carolyn Phanstiel
Nancy Phillips
Stewart Pikula
Judith and Charles Pillans
Michael and Shelden Pisani
Charles and Janet Plosser
Cathy and Robert Randall
Robert and Elaine Reisner
Andre Rudzinski
Dr. and Mrs. Wilbur C. Rust
Paul Salter
Marie Santry
Karl and Margaret Schneider
Richard Seaman
Scott Secrest
Lee Sessions, Jr.
Buddy and Susan Sinor
Jonathan Slaughter
Clayton Smith
Clint Smith
Lloyd and Marie Smith
Peter Smith
Sarah Snell
— In honor of Dr. and Mrs. Lewis Thomas
Emmy Lou Sorum
George and Shirley Spaniel
Ed and Judy Stanley
Kenneth Stanley
Sheryl Starling
Zora Stevens
Mimi Stewart
Robert and Rose Stubbs
George and Nancy Sutherland
Bryan and Karen Tabler
Lian K. Tan
John and Julia Taylor

Dawn Theodore
Robert and Mireille Threlkel
Amy Tompkins
Louis and Joyce Tonti
Diana Ray Tope
Chris Walker
Linda Weltner
Tom and Constance Wiggins
Linda Wilkinson
Lawrence Williams and Mary Jane Johnson
Bibi and Jos Wolke
Dora Yelk

Up to \$99

Rosalyn M. Abramson – In honor of Lois Gosa, retired member of the Jacksonville Symphony
Anna Armstrong
John Coogan
Rosalind Cowie
Kristy Gang
Thomas Harper
Tom Hilton
Peter Howell
Faye Jackson
Yvette Janssen and Martin Ainbinder
James and Anne Kirk
Kerwin Mayers
Elton O'Byrne
Barbara Roberts



Thanks all who help bring the music alive year after year...

Legacy Giving

Our planned giving program and endowment, Foundation for the Future, enables music lovers to make an investment in the Festival's future, ensuring that we will continue to offer renowned performances and educational programs for generations to come. For more information, call 904-261-1779 or visit www.aicmf.com and click on the Support tab.

Our Volunteers

Thank you AICMF Volunteers! Your generous gift of time makes the presentation of a world-class chamber music festival possible.

Susan Alexander
Barbara Alleva Gant
Joan Averett
Susan Barry
Mike and Kathy Baxter
Bill and Susie Birdsong
Beverly Blake
Emma Mills Bledsoe
Andy Bogart
Jon and Marilyn Bosworth
Sam and Barbara Boyd
Sue Braddock
Charlene and Mitch Bratton
Elizabeth Cantwell
Peter Carter
Jean Conner
Linda Cooley
Ken and Carol Copithorne
Stan Cottle
Gerry Custer
Kathleen Devlin
Mark and Susan Foutz
Jacqui Galbreath
Pam Helton
Anne Taylor Hensley
Judson and Mary Louise Hester
Dot Houk
Peter and Ruth Igoo
Linda Janca
Marsha Joyner
Russ and Judy Kahoe
Mark and Donna Paz Kaufman
Nick and Lis Krawiecki
Rob and Amy Laidlaw
Robert and Karen Lavine
Sharon Lennon
Donna Lott
Karen Lotz
Sylvia Madiol
Kyril and Susan Magg
Peter and Jackie Martin
Gail McCamy
Don and Sally McCarron
Jeannine McKeown
Kathleen Minder
Bruce and Jackie Modahl
Eileen Shannon
Ira Ruthellen Muhlberg
Pat Murray
Ellen Myers
Jeanette Nichols
Judy Ogden
David Olson
Jackie Piersanti
Stewart Pikula
Dorothy Robb
Eric and Gail Sakurai

Irene Sanchez
Tapha Sears
Frances Shea
Susan Sinor
Ed and Judy Stanley
Kay Stephens
Rosemary Syczygiel
Bryan and Karen Tabler
Lou and Joyce Tonti
Jerry and Mary Lynn Torchia
Steven Traver
Betty Waas
Jack and Karen Weber
Norman and Marilyn Wesley
Catherine West
Tom and Vicki Whittemore
Steve Zebrasky

Special Thanks

Amelia Park Neighborhood Association
Art on Centre
Dickie Anderson, The Porch
Ktimene Axetell, Young Patrons core group
Jennifer Bauer, Young Patrons core group
Emma Mills Bledsoe,
Strings Program piano teacher
Caroline Blochlinger, website developer
Bob Bolan, governance consultant
Susan Dodge, Royal Amelia Dance Academy
Lea Gallardo, photography
Gary Hackney, Intracoastal Media Group
Will Howery, luthier services
Roslyn Hume, photography
Phil Kelly, Amelia Islander Magazine
Steve Leimberg, photography
Tom Linley, TomStar Services, marketing and publicity
Foy Maloy, Fernandina Beach News-Leader
Kurt Marasco, IT consultant
Jack Melvin, Keyboard Connection
Karen Miller, writer
Kim Rust, Digital Village, Graphic Design
Omni Amelia Island Plantation
Walt Petersen, photography
Lynne Radcliff, master class support
Penny Reid, Mouth of Amelia
Ritz-Carlton Amelia Island
Sue Sinor, grant writer
Lauren Templeton, Young Patrons core group and Instagram
Shelby Trevor, Strings Program violin teacher
UPS Store, Fernandina Beach
The Violin Shop, instrument appraisal services
Catherine West, grant writer
Vicki Whittemore, ticket sales management
Trang Wiest, Young Patrons core group
Suzanne Wolke, Facebook
Chris Yarborough, Intracoastal Media Group

Our Housing Partners

Omni Amelia Island Plantation
Ritz-Carlton Amelia Island
Victor & Linda Bilanchone
Emma Mills Bledsoe
Sue Braddock
Jim & Jane Flynn
Barbara Alleva Gant and Donald R. Gant
Louis and Susan Goldman
Anne Taylor Hensley
Bill Hensley
Lou & Susan Goldman
Steve & Jackie Kennard
Christopher Rex & Dr. Martha Wilkins

Our Leadership Team

General & Artistic Director

Christopher Rex

Executive Director Emeritus

Dr. Joseph Marasco

Executive Board

Emma Mills Bledsoe, President
Irene Sanchez, Vice President
Sue Braddock, Secretary
Kathleen Minder, Treasurer

Board Members At Large

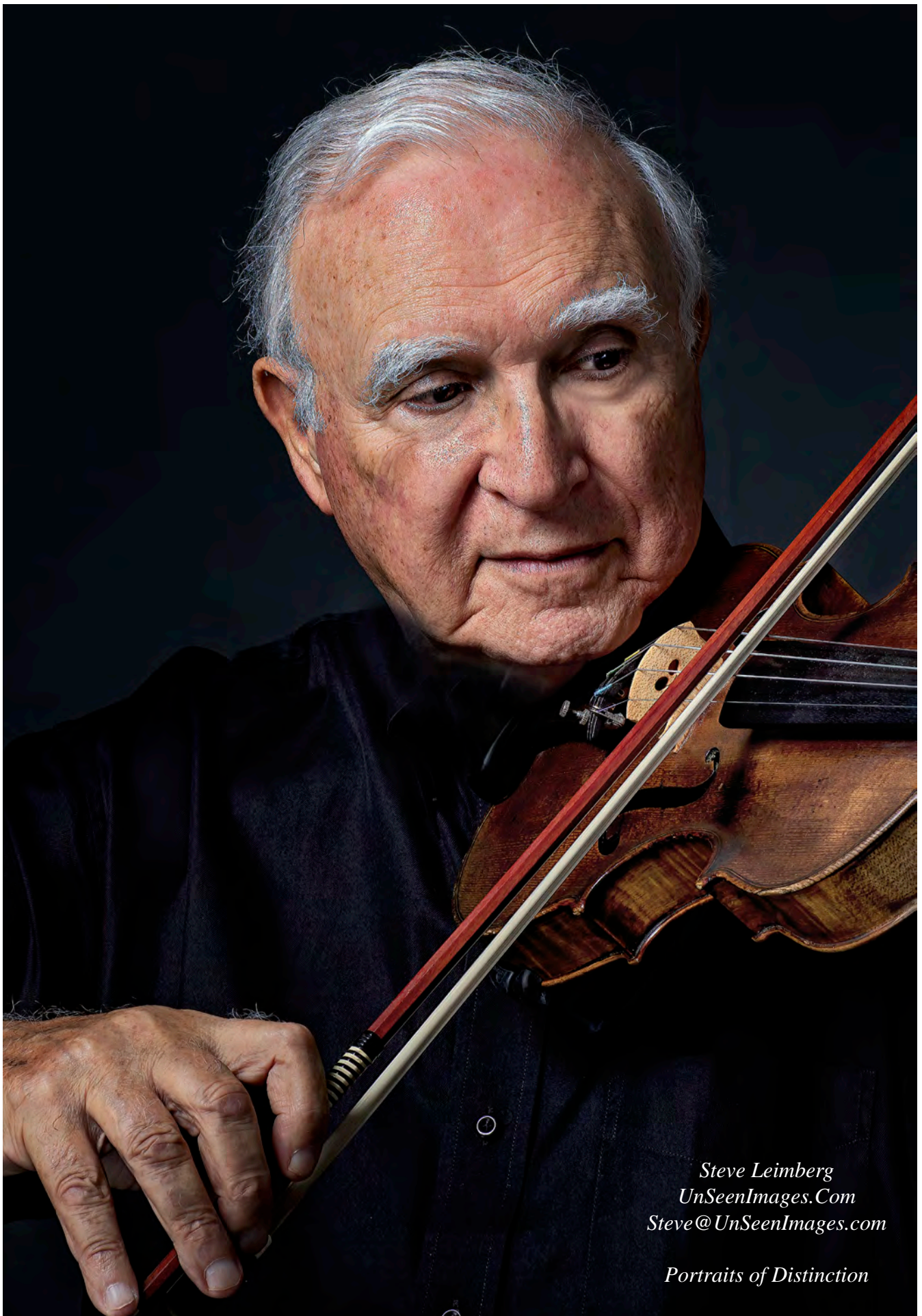
Barbara Alleva Gant
Sharon Lennon
Tom Pippin
Vicki Whittemore
Hugh Williams

Staff

Eric Sakurai, Executive Director
Donna Hinton, Office Manager

Speakers Bureau

Our Speakers Bureau provides information to community groups about the Festival's development into one of the nation's foremost musical events. We also explore the Judeo-Christian roots of Western music with an emphasis on chamber music. For more information and to schedule a speaker, call 904-261-1779.



Steve Leimberg
UnSeenImages.Com
Steve@UnSeenImages.com

Portraits of Distinction



Amelia Island Chamber Music Festival
P.O. Box 15886
Fernandina Beach, FL 32035
www.aicmf.com

Amelia Island Chamber Music Festival's Mission

Present the world's greatest musical artists in chamber music concerts of classical and alternative genres for diverse audiences.

Offer music education to concert attendees, students, and aspiring young musicians.

Promote local businesses and tourism by attracting music lovers from Nassau County, northeast Florida, and beyond.

**Tickets at www.aicmf.com
or 904-261-1779**